



# The Education & Therapy Center at Dominion ABA

**Building** on your child's potential.

## **Education Center at Dominion ABA**

- Private Day School for children age 1 through 5<sup>th</sup> grade.
- Diagnosed with autism, developmental delay, ADHD, sensory processing disorder, language and communication disorders, and conduct or behavior disorders.
- Specializing in ABA Therapy, 1:1 ratio.
- Parent support and in-home generalization provided.
- Full or half day enrollment available

**• Now enrolling for Fall 2017 •**

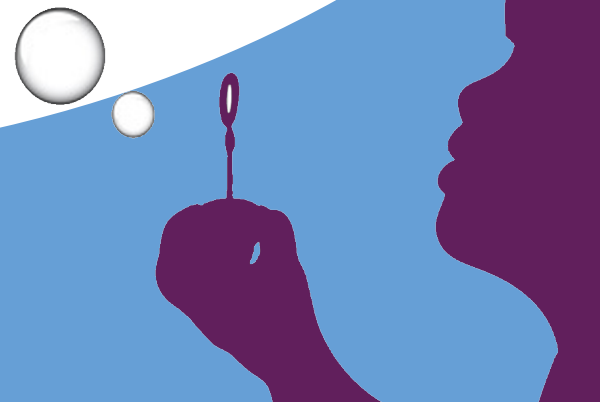
## **Summer Camp/ESY**

- Children age 1 - 5<sup>th</sup> grade
- ABA therapy in a fun day-camp setting
- Individualized goals for all participants
- 1:1 ratio
- Rapid toilet training available upon request
- Camp is overseen by BCBA's
- Insurance, private pay, and CSA accepted for camp
- School placement additionally accepted for ESY

## **Center Based ABA Therapy**

- Children ages 1-14
- Diagnosed with autism
- 2 hour ABA sessions, 1-5x a week, supervised by BCBA
- Parent support provided
- After school hours
- Insurance and private pay accepted

**Located at:**  
**1002 Wilmer Ave., Richmond, VA 23227**



## Who we are

The Therapy and Education Center is a branch of Dominion ABA.

We are a group of individuals dedicated to helping children with autism and other behavior disorders reach their full potential.

Equally important to us is ensuring that families receive the support they need to manage the unique challenges they face.

All of our ABA services are overseen by a BCBA and developed with parent input and clinical best practices.

Our Behavior Therapists are highly trained and frequently supervised in addition to being hard-working, compassionate, and dedicated to your child's success.

For more information or to enroll in one of our programs, contact **Cindy Ackermann** at **(804) 921-2389**.



## Funding

- Many insurances accepted for ABA therapy, school placements
- CSA and private funding also accepted
- Licensed by Virginia Dept. of Education
- Accredited by VAISEF

## CONTACT:

Wendy Belton-Brown, MSW, MACE  
7343 Hermitage Rd.  
Richmond, VA 23228  
804.516.4834  
therapycenter@dominionaba.com  
Hours: 8am-3pm